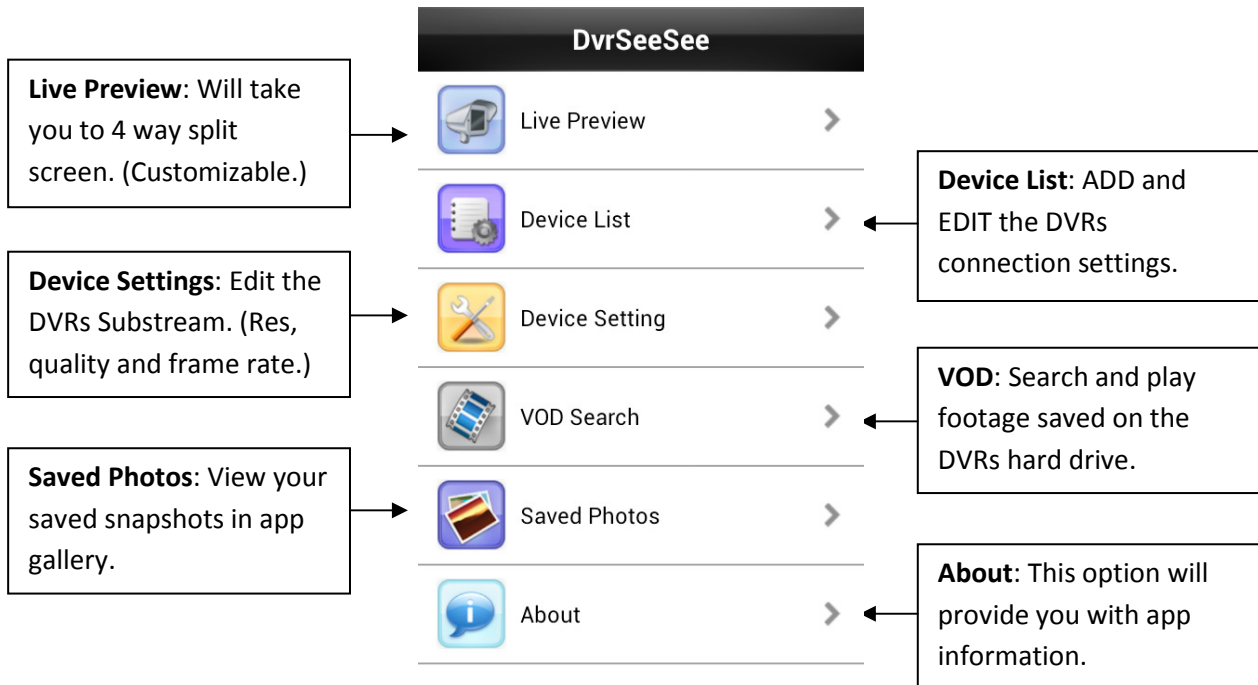
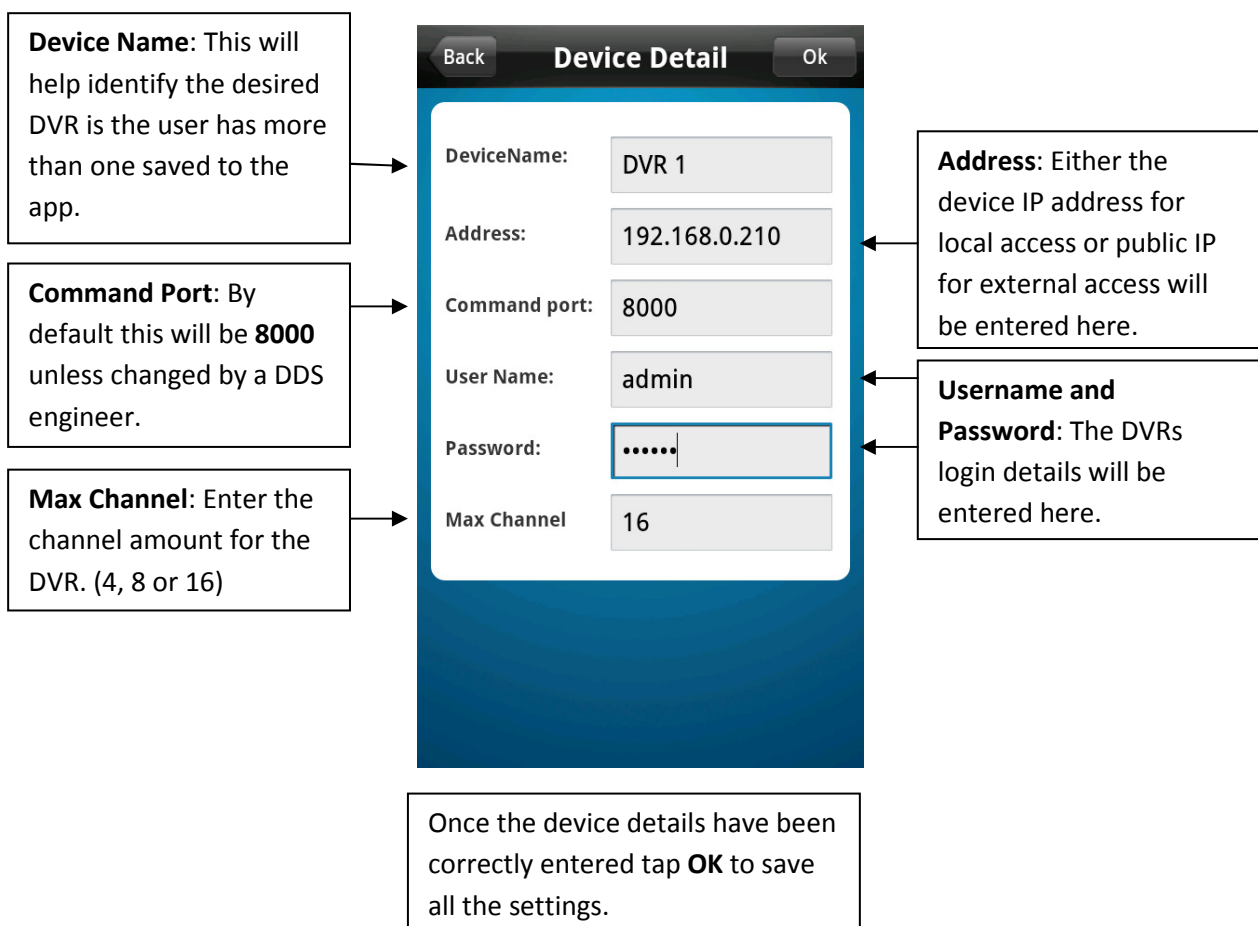


# DvrSeeSee Manual

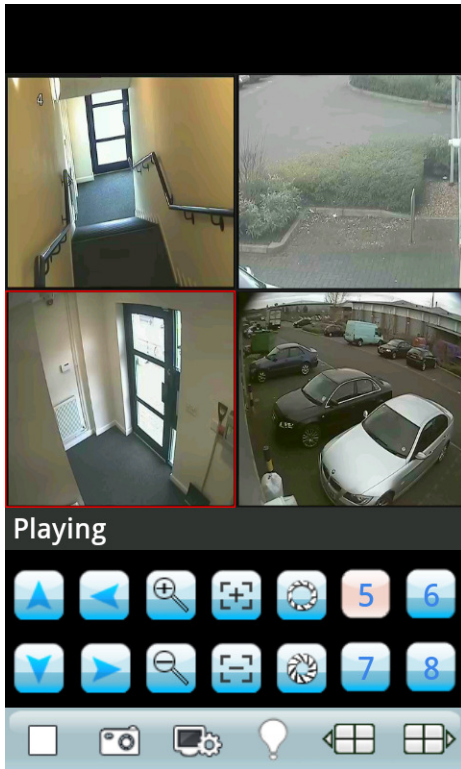
## Main Menu



## Device Detail



## Live Preview



The 4 way split screen view isn't limited to showing every four cameras in sequence, you can in fact customize the four channels to display any set of cameras you wish (providing you have more than four). You can for example have channel 1, 5, 11 and 16 as your set of four cameras.

You can also assign a different DVR to each channel giving you the option of displaying a single channel from four separate DVRs at the same time.

Once a DVR is assigned you can easily change the cameras in each channel by using the numbered buttons.



**Device:** This button will take you to the device list.



**Alarm:** This icon will flash if motion has been detected.



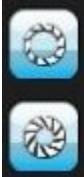
**Snapshot:** This button will take a screen shot of whatever channel are being displayed.



**PTZ control** arrows will allow you to move the camera up, down, left and right. (PTZ only)



**PTZ focus:** This will allow the focus to be manually adjusted. (PTZ only)



**PTZ Iris:** This will allow the iris to be manually adjusted. (PTZ only)



**PTZ zoom:** This will allow the camera to zoom in and out. (PTZ only)



**Numbered buttons:** These will allow you to select which channel you view. (Not limited to 1 - 4)



**Next button:** This button will allow you to change to the next set of numbers. (e.g. 1234 - 5678)

## Alarm Notification



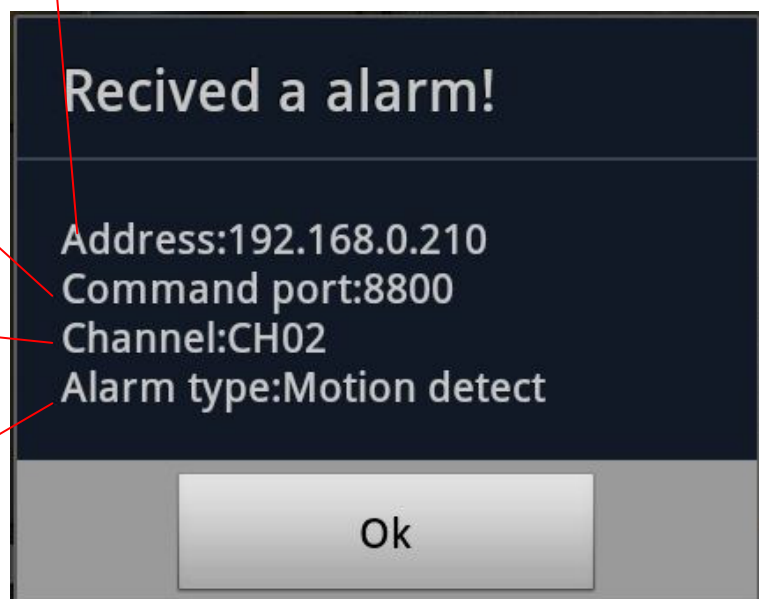
**Alarm Symbol:** This symbol will turn red when an alarm has been triggered . It will display various **pieces of useful information. This function will only work when the app is open. It WILL NOT run in the background.**

IP address of the DVR will be displayed if access is local or public IP address/hostname will be displayed if access is external.

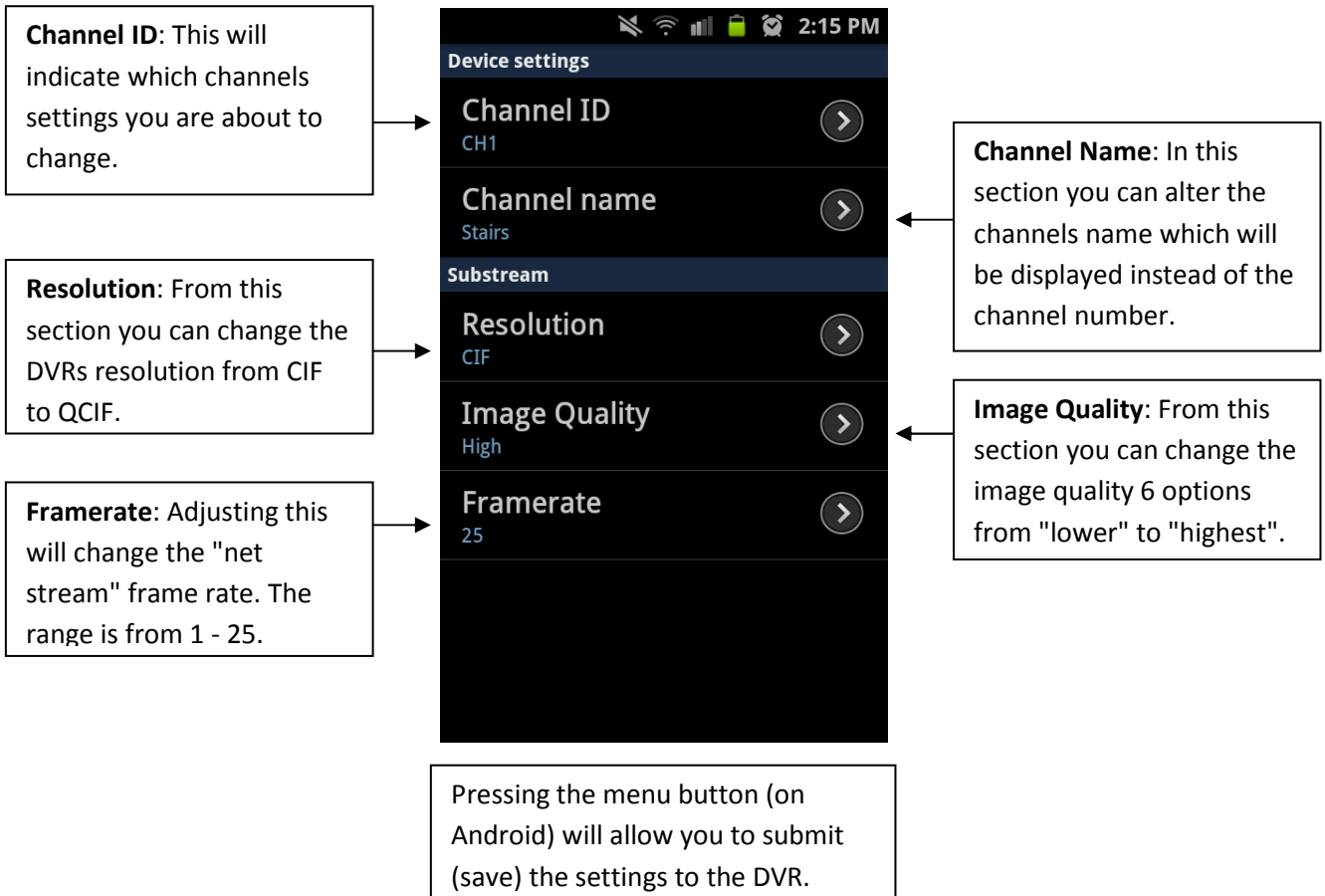
If more than one DVR is on the same network the command port will be unique to each DVR.

Channel will identify which camera channel has trigger the event.

Alarm type will inform which type of alarm event has been triggered. (Motion, video loss, etc)



## Device Settings



## VOD Search (Playback)

The screenshot shows the 'VOD Search' screen with a 'Back' button and a 'Hide' button. The 'Search Settings' section includes a date field set to '2012-3-9', a time range from '00:00:00' to '14:15:45', a DVR selection set to 'DVR 1', a camera selection set to 'CH01', and an event type selection set to 'All'. A 'VOD Search' button is at the bottom right. Below the settings, the 'Search Results' section shows a 'Count: 0'. Callouts on the left point to the date, start time, DVR, and event type fields. Callouts on the right point to the end time, camera, and search button. A callout at the bottom left points to the search results section.

Select the date

Select start time

Select DVR

Select event type

The search results will indicate how many files are available to play under the specified settings.

Select end time

Select camera

Search

The screenshot shows the 'VOD Search' screen with a 'Back' button and a 'Show' button. The 'Search Results' section shows a 'Count: 53'. Below the count is a list of video files, each with a camera icon, a time range, a channel name, and a file size.

Camera Icon	Time Range	Channel	File Size
	09:20:27 - 09:21:36	CH01	10.23 M
	09:26:27 - 09:27:30	CH01	8.82 M
	09:27:48 - 09:28:44	CH01	7.81 M
	09:36:32 - 09:37:23	CH01	6.68 M
	09:41:11 - 09:42:35	CH01	11.93 M
	09:50:39 - 09:51:55	CH01	10.41 M
	09:58:09 - 09:59:24	CH01	11.30 M
	10:09:47 - 10:10:38	CH01	6.26 M
	10:11:10 - 10:12:08	CH01	7.80 M
	10:12:08 - 10:12:59	CH01	6.82 M
	10:13:12 - 10:13:59	CH01	5.09 M
	10:14:29 - 10:16:51	CH01	23.66 M
	10:16:51 - 10:17:35	CH01	7.42 M
	10:17:35 - 10:18:22	CH01	5.25 M
	10:24:31 - 10:26:14	CH01	14.98 M

Once "**VOD Search**" has been selected you will find (providing something has been recorded) a list will be populated of all the individual video files.

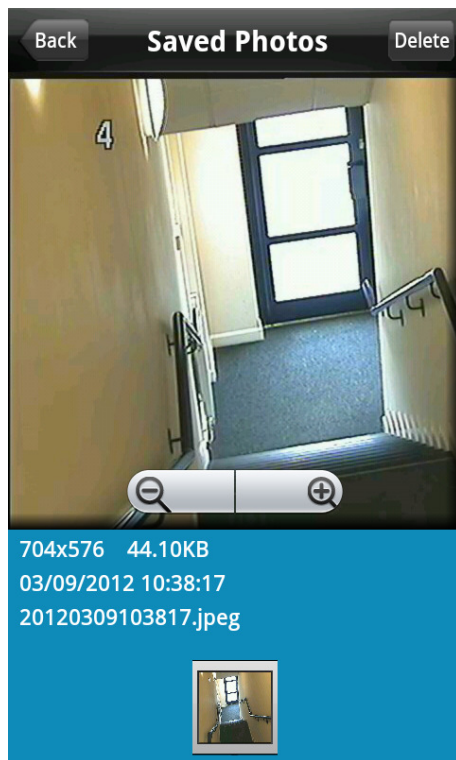
Depending on what you selected in "Type" (All, Manual, Schedule, Motion or Alarm.) the number of files available will vary.

Useful information will be displayed with each file such as the start time and time of the video clip and also which channel it occurred on. The file size will also be given.

To play a file tap which one you would like to view.

From the playback screen you can pause the footage and take a snapshot which will save to the gallery.

## Saved Photos (Gallery)



In the Saved Photos option you will be able you view every snapshot you have take using the camera icon on the live view or in playback mode.

Information presented will be the file size, time and date of when the snapshot was take on live view or the time and date of when the footage was recorded if take during playback. The file name will also be displayed.

Two functions are available in this section. Zoom and delete.

All saved photos are accessible outside of the app in the phones sdcard folder. From there you can change the file name and the change will be reflected in the Saved Photos on the app.