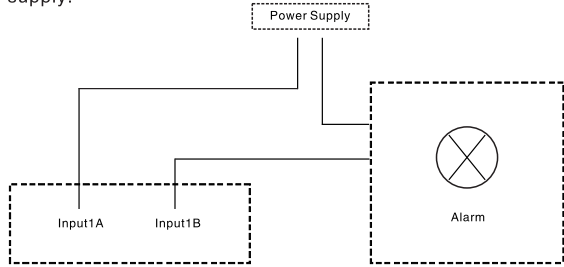




Alarm output connection

The alarm output side is normal–off and do not have voltage output. The other alarm equipments need the individual power supply.



Normally, Alarm's power usually is much bigger, preferably supply power separately, and do not use the DVR's power to supply.Each series alarm output critical parameters are as follows: 240V/AC7A, 125V/AC10A,28V/DC10A, Exceeding these parameters will damage the motherboard.

Appendix DVR specification

function	model
	DVR7232
Product attributes	DVR7232X3
Video format	FD1(CIF)/960H(Q960H)
Video input	32 channels
Video output	HDMI/VGA/CVBS
Audio input	4 channels
Audio output	1 channel
Voice chat	support (Multiplexing with audio input ch1)
HDD port	SATAx4
Alarm input	4 channels
Alarm output	1 channel
Multi–playback	16 channels
DVD Burner (USB external CD writer)	support
RS–485 (half–duplex)	support
RS232	Not Support
eSATA	support

Video output description:

- 1) HDMI, VGA, and CVBS output simultaneous.
- 2) Choose VGA when booting:HDMI and VGA is homologous output as a main output port(output video and menu),CVBS is auxiliary output video and OSD;Choose CVBS when booting:CVBS is main output port(output video and menu),HDMI and VGA is auxiliary output video and OSD.



Digital Video Recorder

Fast Operation Guide

★ Main Functions

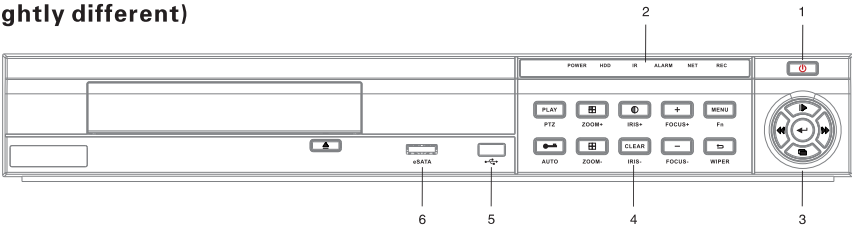
- Support SMTP and Email linkage.
- Support output VGA and BNC(CVBS)、HDMI at the same time.
- Support spot sequence output.
- Support fast CD/DVD burner.
- Support preview channel order adjustable, irregular split screen and sequence.
- Support the HDD dormancy&read–write setting.
- Support clipping backup while playback.
- Support video&pictures lock/unlock/delete.
- Support HDD Group,each channel can be assigned with their own storage HDD.
- Support 4 types recording:Manual,Schedule,Motion,Alarm,Motion detection continuous alarm.
- Support 5 types of screenshot:manual capture/manual screenshot/schedule screenshot/ motion screenshot/alarm screenshot.
- Support pre–record and record duration.
- Support video/pictures inquiry and playback,playback with player.(can be hidden or displayed)
- Support 4 mask area setting,support 4 special interested area simultaneously.
- Support PTZ,serial keyboard and transparent controlling.
- Support DDNS,3G or PPPOE and auto connect function.
- Support IPServer and Initiative to connect platform.
- Support Internet access via WLAN, Universal Plug and Play (UPNP), FTP video upload.
- Remote set para.,update,preview,VOC and backup the DVR recording file.
- Support Web Server function.



⚠ cautions

- Don't touch the power switch or the DVR by wethands.
- Make sure the machine and its case are grounded(There is an earth interface on the back panel of the machine).
- Keep the power supplier stable to avoid abnormal power cut off.
- Avoid dropping liquid or metal into machine that may cause short circuit or fire.
- Don't record or playback untilat least one HDD is installed.
- Short circuit would happen when moist dust ls on the board,so user has totermy brush the board and other accessories to make the machine work in good condition.
- Video/audio/RS485 devices cannot be plug or draw when the powerison,or else the equipment will be easily damaged.
- Use the power on/off button on the front panel instead of directs hut off the power directly when turn off the DVR,so that the hard disk won't be damaged.
- DVR can scan the entered HDD automatically,if the HDD is the new one that is not formatted by DVR, the system will prompt users to format.(system can support formatting,it will not depends on PC).
- Warning:Don't try to plug in HDD to PC if not specialized persons,the following operation of HDD on PC will cause HDD can't be recognized and need format when plug in at next time:
 - 1,modify or edit the file name.2,open the file and edit the content.
 - 3,copy back the data which copied out before to HDD again.4,Some third party browser software will also change HDD physical storage location in the background.
- In order to keep the integrality of the records,damaged disks should be exchanged promptly. (There is information about the error of the disk in the logbook.)
- When connected to the network or HDMI,please use network cable or HDMI cable with magnetic ring.

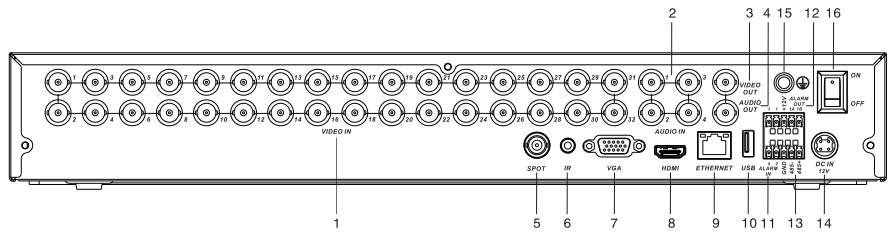
1.The front panel schematic diagram (panel physical key position may be slightly different)



SN	function area	function instruction
1	power key	This key is used for closing down or starting DVR. The intimation of closing down or not appears when press this key under the power on status. Need to press this key to start DVR under the manual closing down status
2	status guiding light	Including power guiding light, HDD guiding light, IR guiding light, alarm guiding light , network guiding light and record guiding light in chief
3	controlling function	Control up, down, left, right and speed forward, speed backward , frame forward of playback
4	function area	Operate common use functions, such as menu, playback, picture swift, focal distance, lock, clearing, return etc
5	USB interface	Connect USB mouse
6	eSATA interface	Connect eSATA HDD

2.The back panel instructions of DVR

Take the DVR7232 DVR as a sample:

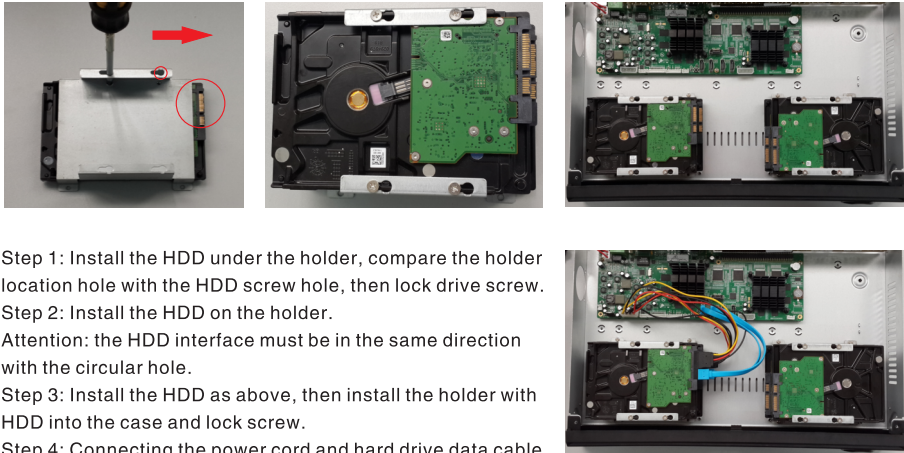


NO.	Interface	Operation Manual
1	VIDEO IN	Connect video input, BNC
2	AUDIO IN	Connect audio input, BNC
3	VIDEO OUT	Connect monitor, local video signal and menu output
4	AUDIO OUT	Connect monitor, local audio signal output
5	SPOT OUT	Connect monitor for sequence
6	IR Interface	Connect the extension cord of controller IR received port
7	VGA Interface	Connect VGA
8	HDMI Interface	Connect high definition device
9	ETHERNET Interface	Connect HUB
10	USB Interface	Connect USB, Backup files
11	Alarm input	Connect alarm input(4 channels)
12	Alarm output	Connect alarm output(1 channel)
13	RS-485	Connect RS-485
14	Power	12V
15	Ground	Ground line
16	Power ON/OFF	Power ON/OFF

3.Package Checking

After opening the box,please check the host computer whether it is distorted or mangled.If there have,please donot use it and contact your suppliers in time.Meanwhile,please check all accessories of the host computer;do read the attached information carefully.(Notes:Accessories as for the packing list)

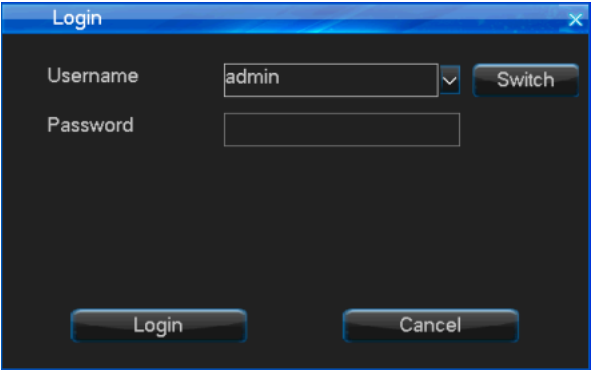
4.steps of hard disk installation



Step 1: Install the HDD under the holder, compare the holder location hole with the HDD screw hole, then lock drive screw.
Step 2: Install the HDD on the holder.
Attention: the HDD interface must be in the same direction with the circular hole.
Step 3: Install the HDD as above, then install the holder with HDD into the case and lock screw.
Step 4: Connecting the power cord and hard drive data cable.
Notes:please purchsse HDD from formal channel to get the quality assurance.This series DVR don't support the HDD hot swap,please connect the data and power cable of HDD before you turn on DVR. User should format the HDD before you use the record function. Besides, transportation is not allowed while connected with HDD.

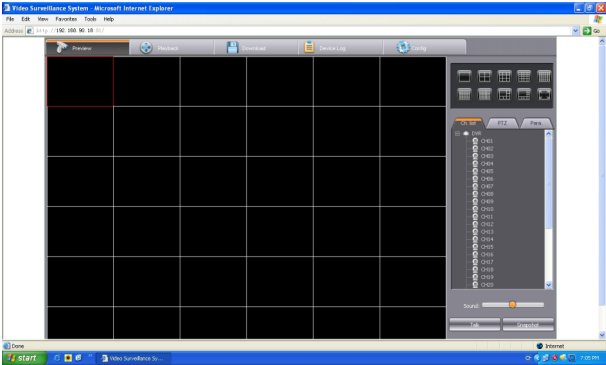
5.Power on/off and login/lock

Power on: After connected up the power cable, the front panel of the DVR will start and enter the standby state. Click the “power” button on the remote controller for 3 seconds to enter the running state.
Power off: When the system is under the running state and logged in,click power button on the remote controller to popup the shut down interface. After clicked the “confirm” button,the system will enter the standby state.
Login/Lock: To avoid unauthorized user using the machine and influence the normal work of the system, we specially setting the keystroke lock and unlock function for the machine.
When the system is in the status of locking “■”, Press the “▶” button on the remote controller for about 1 second,the fig of login will appear as follows :
Input user name and password on the login port(distribute in authority in advance),after you input correct user name and password and press “login” ,the sign “■” on the lower left corner will switch to “■”, automatically,and show the user name of current user.Then you can carry on the operations in the authority to the system at the moment.
1、 Default User : admin, Default password : 888888 ;
2、 When you in put the incorrect password 3 times continuously, the system will alarm and get into the status of locking automatically.Inthatcase,you need toclick the “clear” on the remote controller to retype the password :
3、 To input name and password,you can left click mouse.It will pop out software keyboard.Right click mouse to quit.
Note : For the sake of safety, please change the default password immediately.



6.WEB instructions

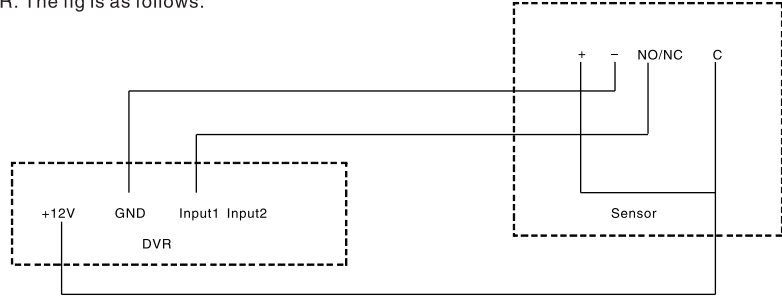
Notice:Please set firewall rank for low or medium,and surf software or net assistant software,etc. should be blocked or unloaded.Otherwise the software may not run properly.Please guarantee to install DirectX9.0 of Microsoft and confirm the Internet Explorer edition is 6.0 version or above. the preview method in WAN is same with in LAN,the standard is http://WAN IP:HTTP port.
LAN Configuration for IE Browse
【 1 】. “ Ping ” the host IP first to confirm if the DVR is connected.
【 2 】.Input the address of the host to access the equipment in the IE browser http://device host IP: 81,and then enter to connect,after a successful connection click”download activeX” to download, and running it.The default of IE access port is 81,the standard IE address is http://host IP:port when change to other port.
【 3 】.Refresh the browser,enter your user name and password to login in the login box.If login is successful,the interface will pop up as follows.



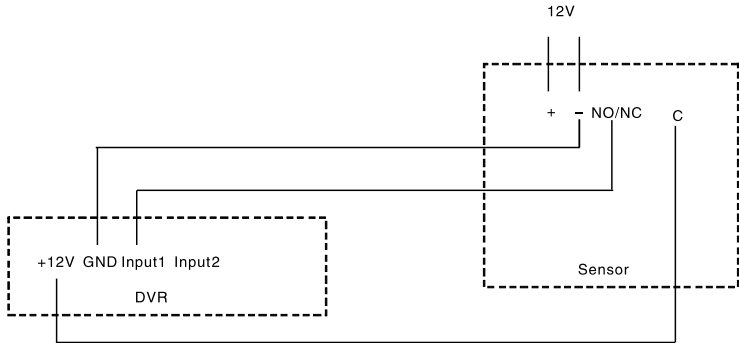
7.Alarm Input/Output Connection

Alarm input:
Input resistance: 22KQ , It is to be alarmed in high power level, low power level will not to be alarm.
Note: The DVR will be alarmed when the power is higher then 0.8V, otherwise there is not any alarm coming.

Alarm output: relay (240VAC/7A,125VAC/10A,28VDC/10A), Normal (relay open), Alarm output (relay close). Sensor power: The machine provides a +12V DC power output port.
Alarm sensor connection:
Alarm input: The physical connections of the normal on/off mode are the same. And user can select normal on/off mode in the DVR. Typical alarm connection: The sensor power supply is provided by DVR. The fig is as follows:



If the distance between the sensor and DVR is too far, the sensor requires a separate power supply:



If we parallel connected the sensor, the DVR can not recognize the triggered sensor.

