

Android Mobile Monitor Instructions

Android Mobile steps, operation is as follows:

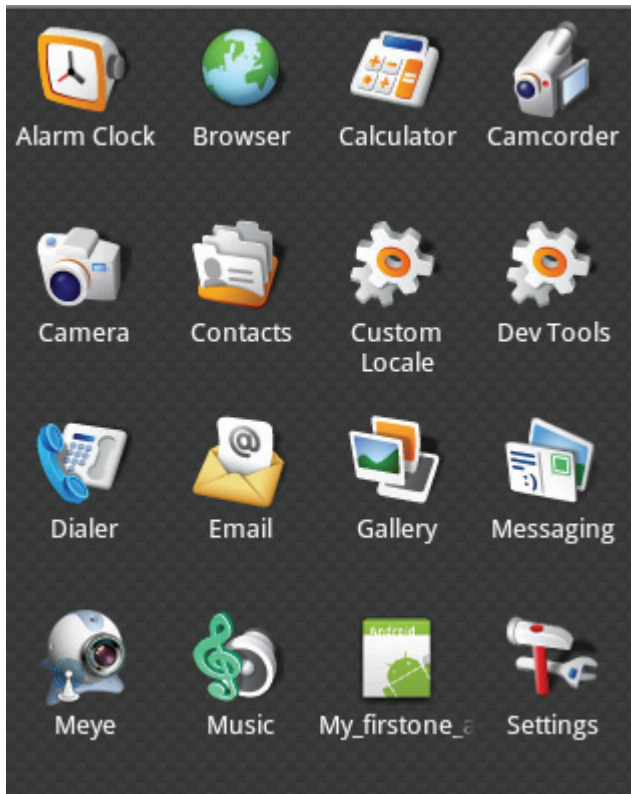
Installation

1) Downloads

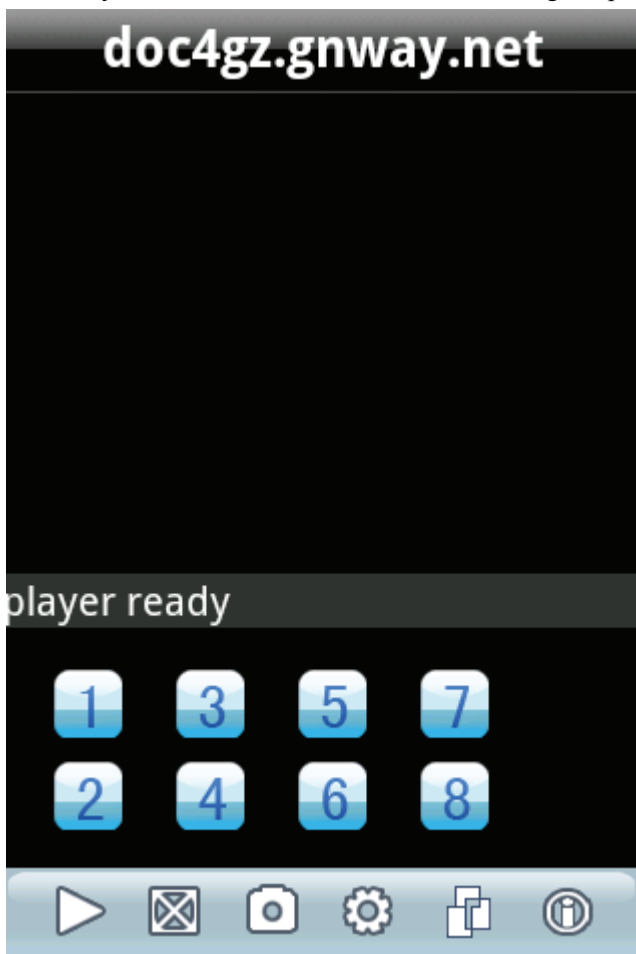
Copy Meye.apk to your phone, the default is stored in my document.



2) Click the application installed, installing the program icons will appear. As shown:



3) Click MEye, after the initial interface for running the program shown in figure:




The button corresponding to the above operation is as follows:

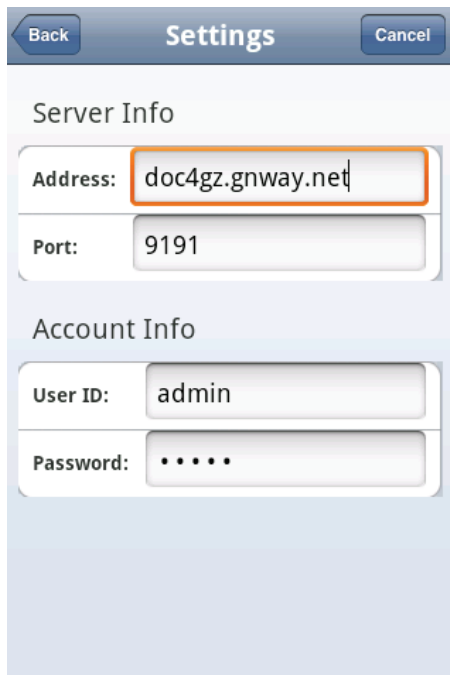
Channels					
Switch between palying and stopped	Switch between normal code and magnify code	Capture	Settings	The next group of channels	About Us

Note:

Grab the file is saved to the phone default gallery directory.



4) Used for the first time or change settings, Click  to set up preferences. As shown:



Address:

DVR public IP address or DDNS

Port:

DVR's the port server settings.

User ID:


the same User Name with DVR settings

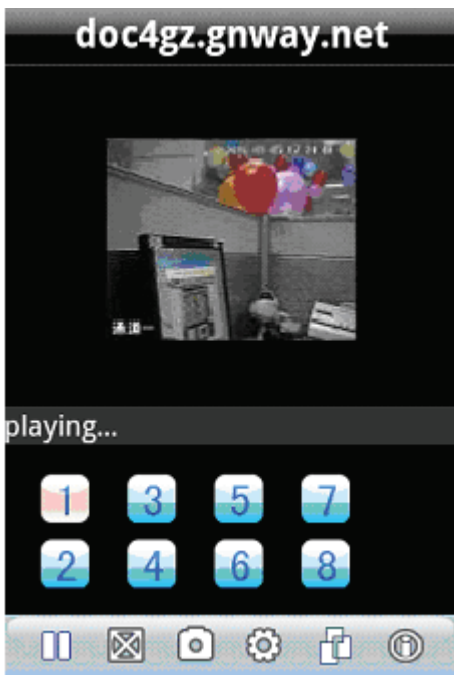
Password:

the same User Password with DVR settings

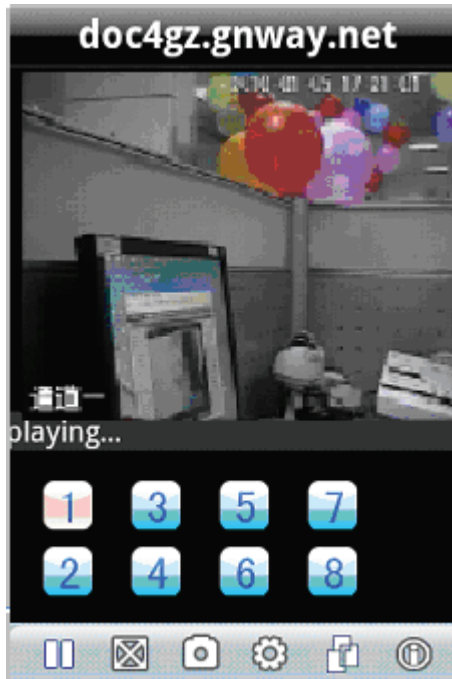
5) Vidio Display



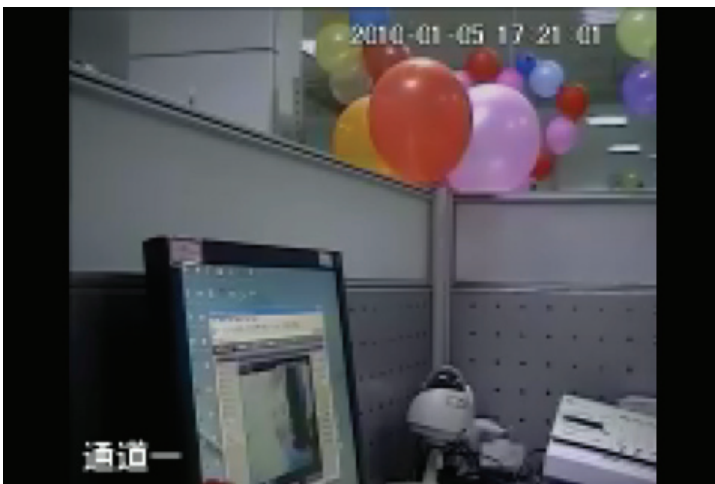
Click , you can switch between normal code and magnify mode. When you revolve your phone, it automatically switches to full screen mode. As shown.



Normal mode



magnify mode



Full screen mode

6) Channel Switching

Selecting one channel, program will open the corresponding channel and automatically play the video. Program by default show 1~ 8 channel, was elected in the next set of channel button, channel number will be switched to 9 ~ 16 channel.

Note:

Program by default is 8-channel. When successfully connected device, it's automatically according to the type of device to support 16 or 32 channels.