

# Specification of PS-R212Y (RF/MF model)

## 1. Lock picture



### ● Mechanical parts Specification

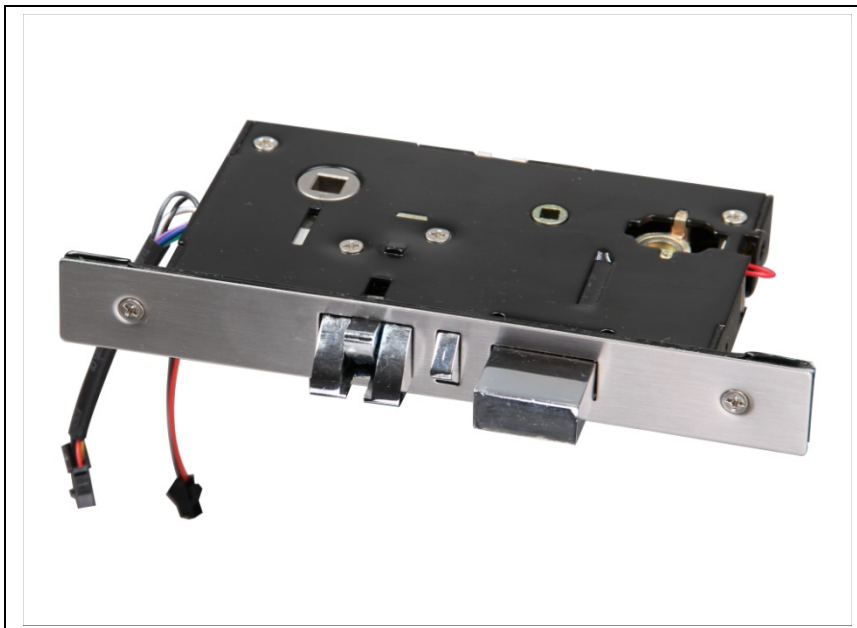
- Panel Size:242\*77\*18
- Door thickness requirement:38mm-60mm.
- Japan motor more than 500,000 lifetimes.
- Turn handle up to deadbolt lock at inside and outside. Convenience and simplification
- Patent detached two-gear clutch device to guarantee the durability of mortise.
- **stainless steel material**

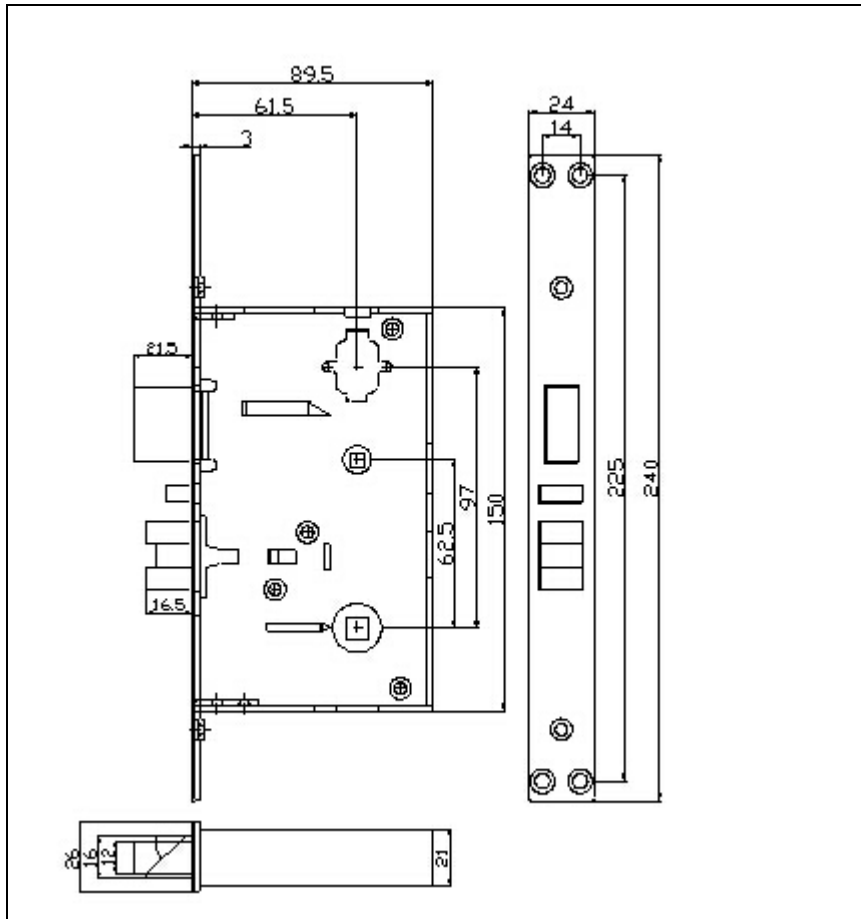
## 2. Electronic parts specification

Work Voltage	DC6V
Alarming Voltage	DC4.5V

Static Current	<20uA
Dynamic current	<200mA
Work temperature	-20-60 degree centigrade
Work humidity	10%-85%RH
Packing	10pcs/Carton.
Packing size	610*372*376

3. Lock mortise size and picture

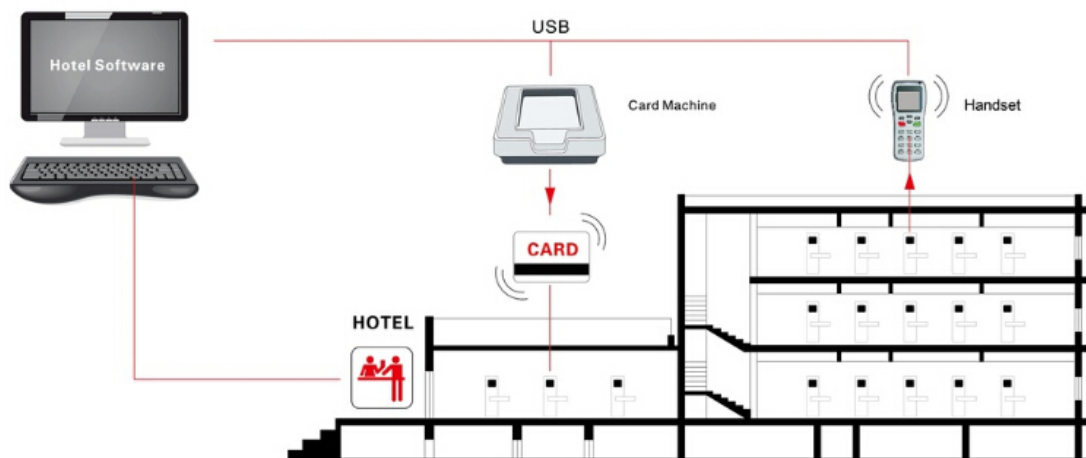




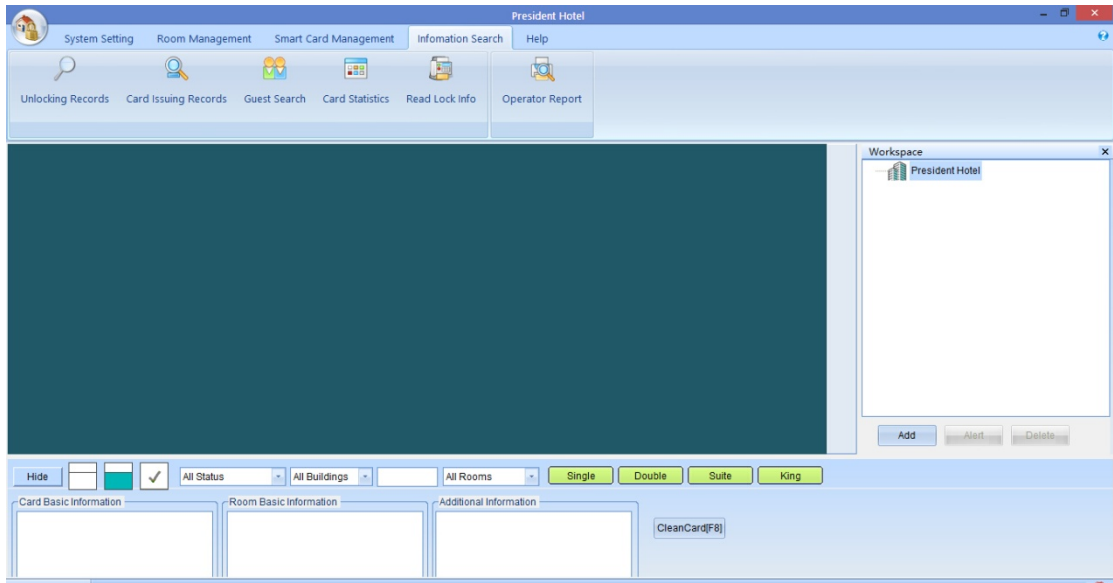
#### 4. System information

System composition: Hotel door management: software+usb card machine+smart card+smart card

lock (Mifare Model) +handset



#### 5. Software interface (only available in Mifare Model)



7. Interface can be provided to connect hotel management software