

INSTALLATION AND MAINTENANCE INSTRUCTIONS

Conventional Manual Call Point

SPECIFICATIONS

Operating Voltage Range:	9~32VDC Volts
Nominal Operating Resistance:	300Ω
Relay Contact Ratings:	2A/30VDC
Operating Humidity Range:	95% RH, Non-condensing
Operating Temperature Range:	-10°C to 50°C (14°F to 122°F)
Dimensions:	W89mm ,H93mm, D26mm
Base Dimensions:	W87mm ,H87mm, D31.5mm
Weight:	Net Weight 125g (with base)
Colour/Case Material:	Red/ ABS



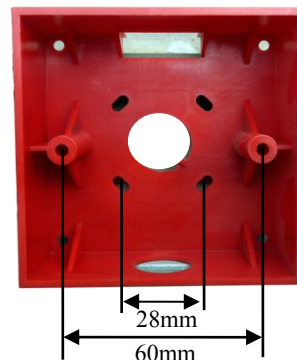
INSTALLATION

This manual should be left with the owner/user of this equipment.
 The call points should be installed in a position where they will not be subjected to mechanical stresses , and where the temperature is within the operating temperature range.
 Areas where there are , or are likely to be, aggressive substances should be avoided .

Installation Dimensions

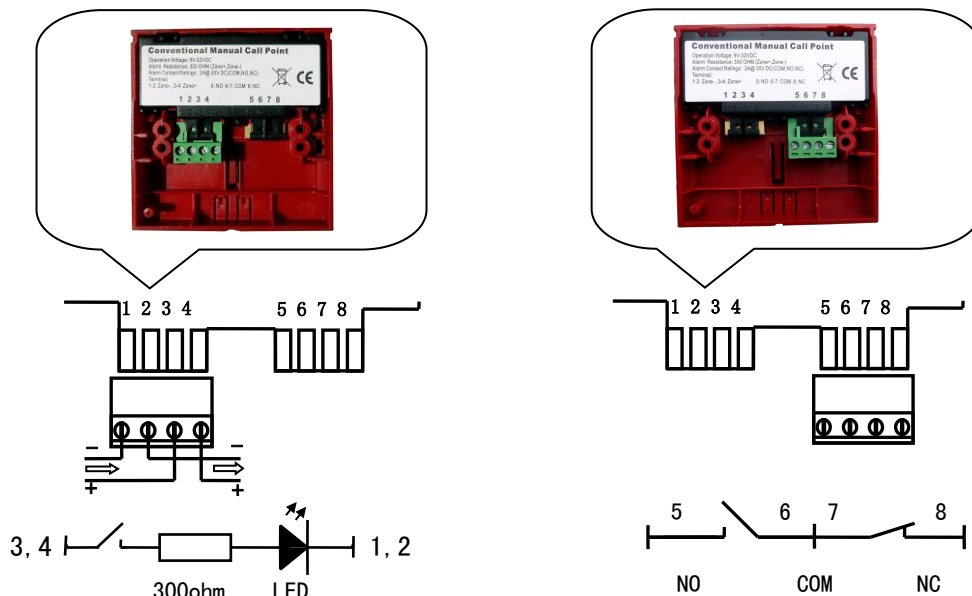


Call point



Base

Connection Details

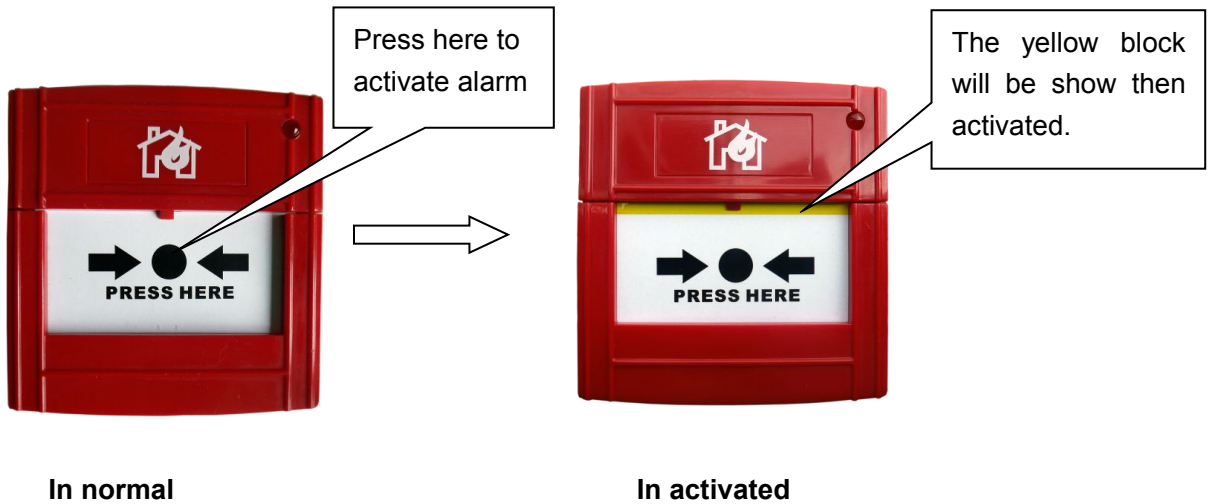


Push fit connector

After wiring the terminal connector, plug into the appropriate position.

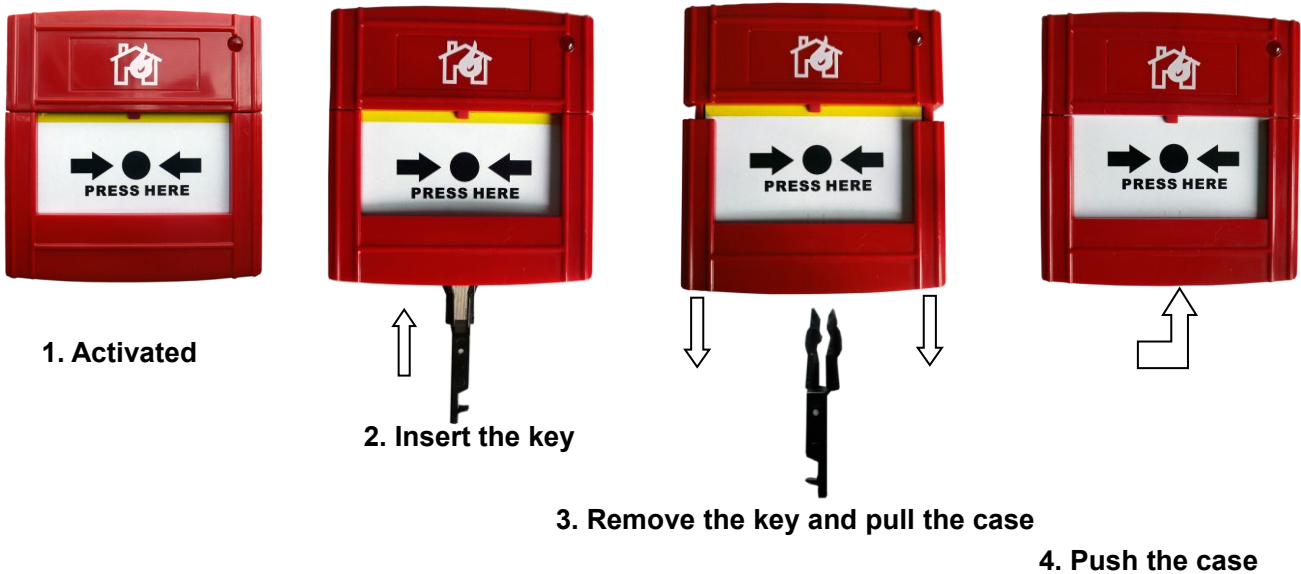
TO ACTIVATE ALARM

The conventional manual call point designed for conventional fire alarm system for reporting fire or emergency condition by its button latches. The call point has one 300 ohm resistor is used on the PCB board between Zone+ and Zone- or one relay contact (NO, COM, NC) output when the button is pressed.



TO RESET

The call point can be reset by a key from alarm return to normal status.



MAINTENANCE

Apart from regular testing of the call point(see diagrams above) ,as part of the scheduled maintenance of the fire alarm system, no additional maintenance is required.